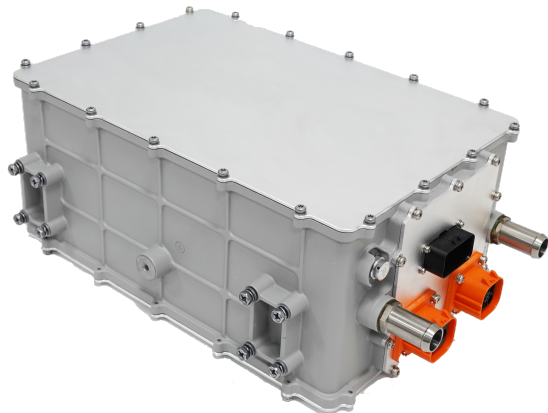


20.0kW On-Board Charger



Model for North America

- Level II Charging 20.0 kW
- Full Output Power with Single-Phase Input
- Highly Efficient
- CAN Controlled
- Compact Design
- Liquid Cooled
- Meets Conventional Truck & Bus Requirements
- Standard SAE J1772 Protocol

GENERAL SPECIFICATIONS

Model #:	eOBC20.0HV-01
Rated Output Power:	19.2 kW
Input Voltage Range:	90-264 V _{AC} , Single-Phase, 45-65 Hz
Control Voltage:	12 V
Control Current:	4.0 A
Output Voltage Range:	450-750 V _{DC}
Output Current:	36.0 A
Cooling:	Liquid Cooled Water Glycol (10 L/min)
Environmental Protection:	IP67
Operating Temperature:	-40 °C to +85 °C
Weight:	48.5 lbs (22 kg)
Dimensions:	16.5"L × 13.6"W × 7.2"H (418 mm × 346 mm × 184 mm)